

Health Protocols at East-West School of International Studies





**Welcome
Back!**



How to limit the spread?

What personal steps can we all take to
protect our classmates, teachers, and
school staff?

Personal Safety

Health routines will protect everyone in our community and slow the spread of Covid-19.

- Face coverings that cover the mouth and nose are required at all times in the building.
- Please maintain proper social distancing of 6 feet with a mask. This includes walking in lines, up stairs, and in classrooms. Use markings on the floor to guide you.
- Wash hands regularly. Hand sanitizer units are in every classroom.
- Remember: If you do not feel well **STAY HOME!**
- If you have been exposed to someone with Covid-19, **STAY HOME.**
- If you have traveled to states or countries with high infection rates, **New York State has a mandatory 14 day quarantine period. Please report this immediately to your guidance counselor and teachers.**



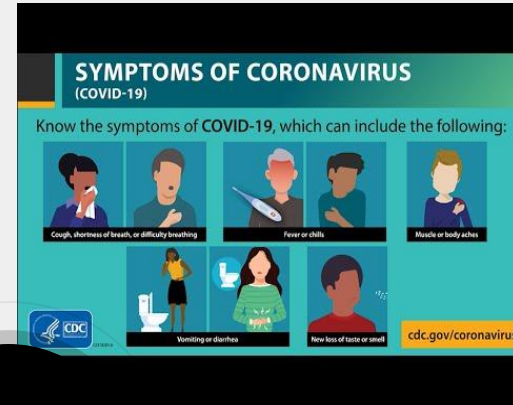
Stay home if....

You do not feel well.

Covid-19 symptoms can include:

- ☐ Cough, shortness of breath
- ☐ Fever or chills
- ☐ Muscles or body aches
- ☐ Vomiting or diarrhea
- ☐ Loss of taste or smell

You will need to check for these symptoms before leaving home. **Use a thermometer to check for fever**





1

CDC Says...

Video



We should all do the right thing... to the fullest extent possible. All of us can help slow the spread of the virus, protecting the elderly, the vulnerable, and each other.”

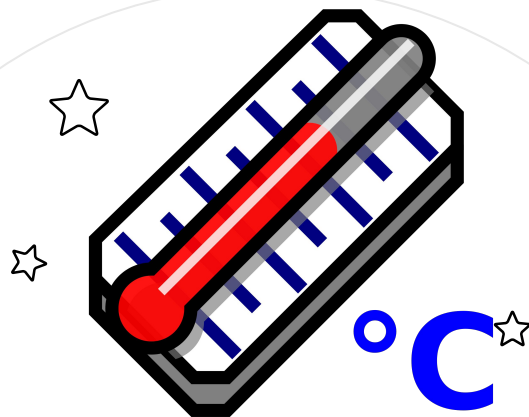
- President Barack Obama



New Rules...

New health protocols affect every part of the day to encourage student and staff safety

- Health Screening
- Illness during the school day
- Entry and dismissal
- Bathrooms
- Passing
- Breakfast and Lunch



Health Screening

Every student, staff or visitor must pass a health screening daily.

<https://healthscreening.schools.nyc/>

And if you feel sick during the day...

Immediately inform your teacher.

- ★ **We will have you examined by the nurse**
- ★ **Your family will be contacted.**
- ★ **You will be sent home.**



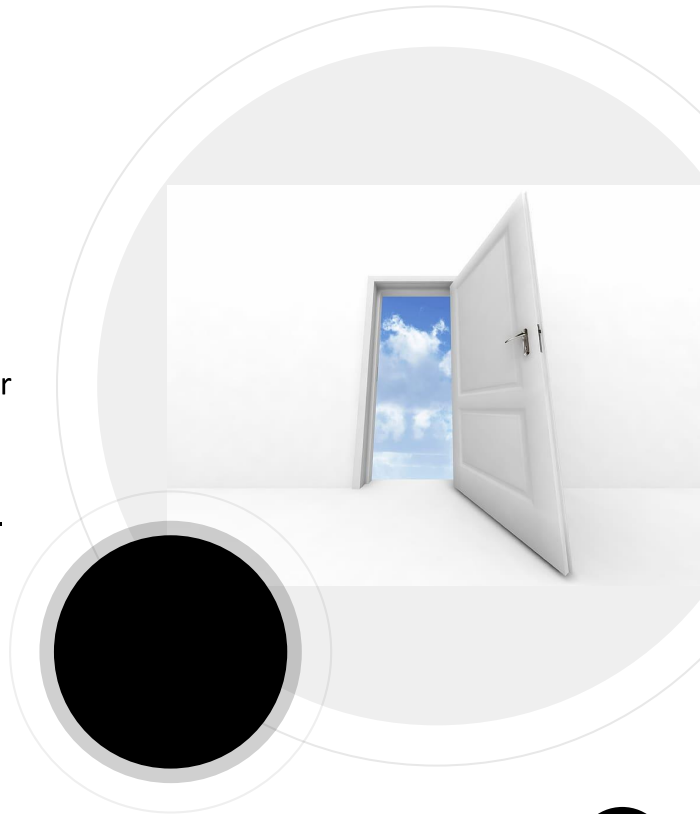


Entry and Dismissal

Morning Entry

Entry

- Line up, socially distanced, outside starting at 8:00 AM.
- Deans Mandel & Leva/AP Kleiman will be checking health screening results and taking temperatures.
- Entry for students begins no earlier than 8:25 AM.
- Every student's temperature taken with touchless thermometer or temperature scanner at the door.
- Students go straight to their first period classes.
- Students only use staircase B off the lobby to go upstairs.
- Late students check-in at the front door with health survey and temperature check.



Dismissal

Stagger dismissal by hallways.

1st- Rm 420- 426
2nd - Rm 417- 409
3rd - Rm 404 hallway
last

No lockers will be
assigned.

Staircase A is used for
dismissal.

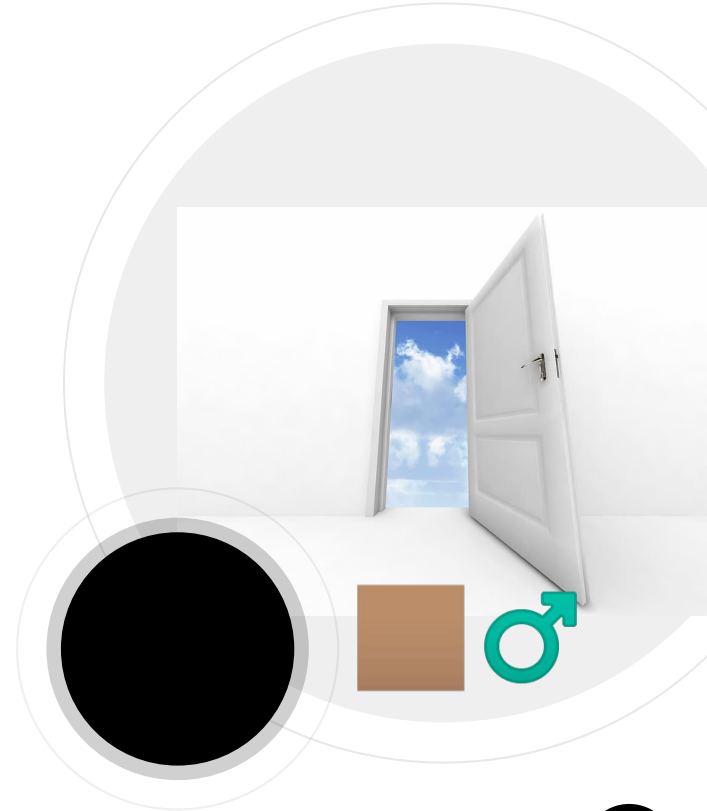
Students must
go straight to
the exits at
dismissal.

No stopping to
visit classes or
lockers.

Teachers
accompany
students
downstairs for
the first week.

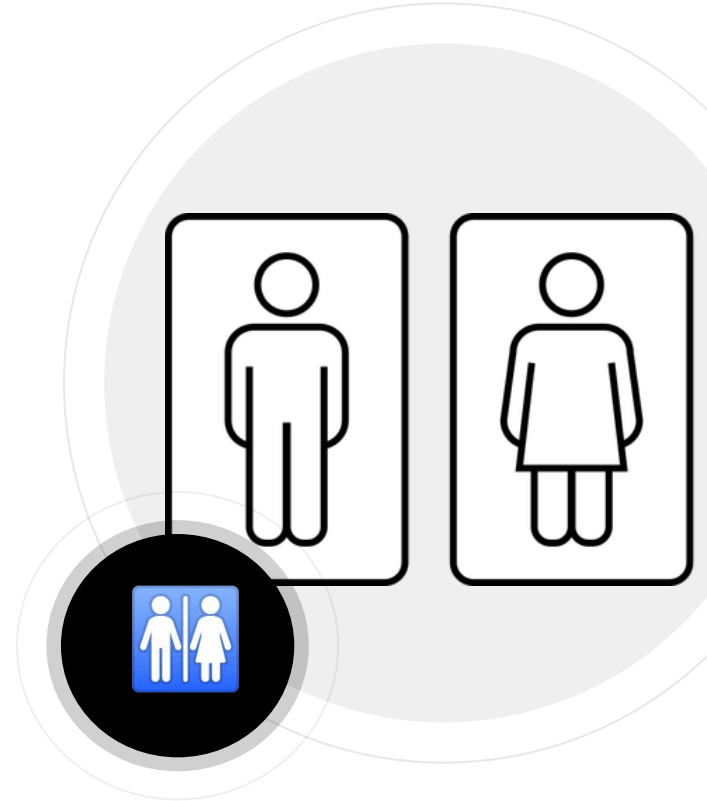
Staircases

Staircase A is
designated for
dismissal and
downstairs only.



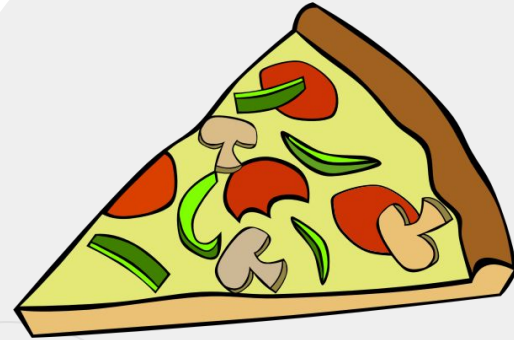
Bathroom use...

- ❑ **1 student** in the bathroom at a time.
- ❑ Monitor is stationed in the hallway outside the bathroom and records students names and times.
- ❑ No students allowed in the BR when not monitored.
- ❑ Students must socially distance waiting in line using the floor markings.
- ❑ No bathroom before class and for the last 5 minutes.



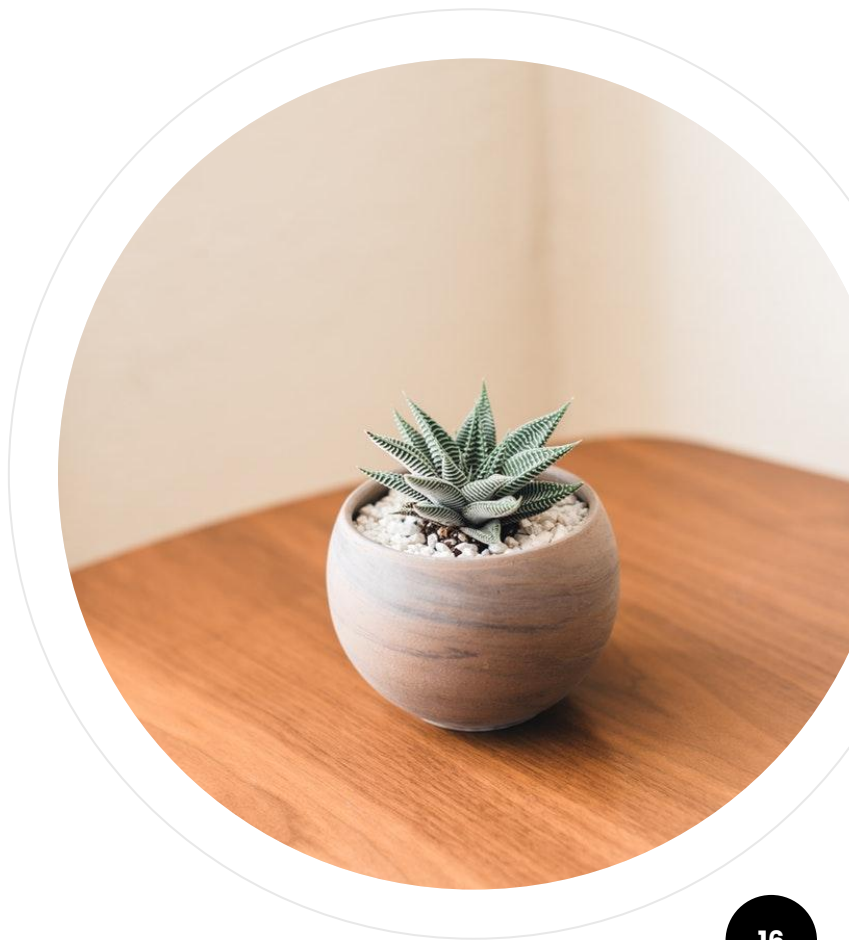
Lunch/ Breakfast

- ☐ Lunch takes place in classrooms.
- ☐ Lunch during **5th period only**.
- ☐ Lunch is a working lunch. Students eat during independent work only.
- ☐ Lunch will be delivered at 11:30am to the main office
- ☐ Teachers should wear masks and face shields. Students should be facing away from the teacher while they eat.
- ☐ Breakfast is a grab and go bag taken from the top of the stairs period 1. Food should only be eaten in the first period class.



EWSIS Protocols

See the link to review all of the school [health protocols](#)





Thanks!

Any questions? Reach out to...

Dean Mandel rmandel@ewsis.org

Dean Leva mleva@ewsis.org

Assistant principal Kleiman kkleiman@ewsis.org

Assistant Principal Bantz dbantz@ewsis.org

Assistant Principal Patterson lpatterson@ewsis.org